

1-264 Slam-Cam Quarter-Turn Pr20.1 L18

Tool, hand or key operable

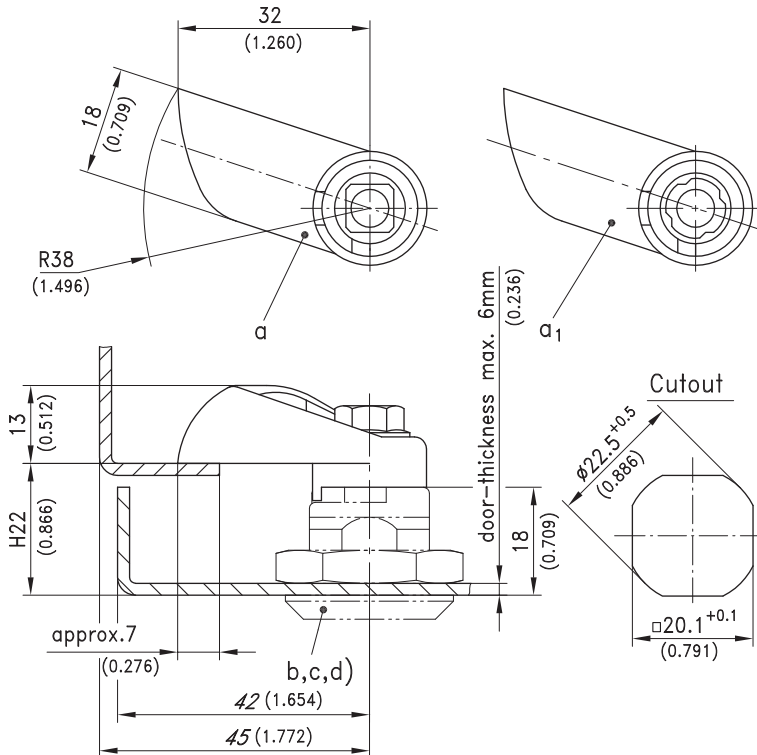


Product Notes:

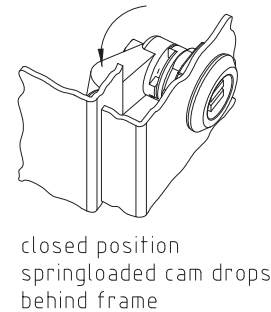
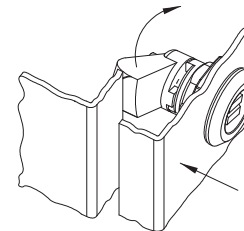
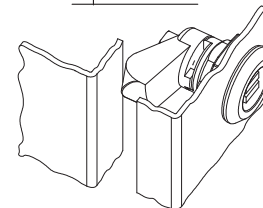
- Slam-Cam "a" is for use with all inserts.
Washer replaces the wave washer under the insert
- Slam-Cam "a1" is for use with key cylinders and handles
- A pre-assembled Quarter-Turn can be installed through the cutout
- Slam-Cam unit consists of a cam, a spring and M6x10 hex screw with serrations under the head and powder lubricant that prevents deterioration of spring strength
- The screw supplied with this cam should be used in place of the screw supplied with the insert
- It is recommended that the components using this cam be pre-assembled by DIRAK.
Correct assembly Part No. can be supplied by DIRAK upon request

Material:

- **Slam-cam:** Zinc Die, Chrome Plated
- **Spring:** Steel, Zinc Plated
- **Spacer:** POM



Operation



	Part No.	See Page
a) Slam-Cam with spring and Teflon washer		
RH version, e.g. hinges on RH side	200-9605	
LH version, e.g. hinges on LH side	200-9606	
Other dimensions on request.		
a1) Slam-cam with free-stroke		
RH version, e.g. hinges on RH side	200-9607	
LH version, e.g. hinges on LH side	200-9608	
b) Housing		01.20, 01.21, 01.40, 01.51
c) Inserts		01.98, 01.99
d) Handles and cylinder locks		01.27, 01.59